



# LAND FOR WILDLIFE

## New South Wales

*"The National Program run by Locals"*



Number 12 – Dec 2015

### Hello Land for Wildlifers,

As we approach the end of the year, I'd like to provide an update on what is happening in Land for Wildlife.

There are now over 1300 properties registered with Land for Wildlife in NSW and we are able to assess and register properties in 53 Council areas.

In August we held the Biennial Forum at North Sydney. Fifty people from across NSW attended and heard a range of speakers from a national perspective through to local networks. Thank you to our sponsors, OEH, Foundation for National Parks and Wildlife, North Sydney Council and Wingecarribee Council.

The partnership with the Great Eastern Ranges continues to grow and LFW was able to help several regions receive grants.

In 2016, I hope to visit every Regional Provider to provide any help and to see what is being done for our wildlife.

As always, Land for Wildlife would not be possible without our great Regional Providers, volunteers and supporters. A special Thank You to Beryn at CEN for her diligent work on registrations and mailing out memberships.

Best wishes for the Christmas Season and the New Year,

Cheers  
John

If you would like to get in touch or have any stories or information to share, please email me :  
[lfwsw@cen.org.au](mailto:lfwsw@cen.org.au)



### Land for Wildlife Forum: 7 & 8 Aug, 2015

On the first day of the Forum, attendees learnt about the vast Great Eastern Ranges project, a 3,600km 'continental lifeline' linking people, reserves and habitats within and across landscapes. The GER extends from the Grampians in Victoria to the Queensland Wet Tropics. It exemplifies the purpose and function of LfW.

Other presentations discussed the challenges of:

- connecting and maintaining large natural landscapes;
- maintaining healthy ecosystem processes;
- enabling seasonal and adaptive movement;
- understanding and adapting to change; and
- eradicating invasive plant and animal species.

Another suite of issues was identified as vital for future conservation management. These include the need to:

- apply the full range of conservation tools to projects;
- cultivate awareness and understanding of bird migration/ flyways;
- fully exploit contemporary technologies from social media and phone apps to drones; and
- maintain networks in the face of potential council amalgamations.

LfW was seen as an excellent tool for connecting like-minded people who are conserving their land in disparate parts of the state. Some people take this connected to another level by also joining the Humane Society International Wildlife Land Trust, which has members in India, Peru, South Africa, New Zealand and Indonesia.



*Attendees enjoying proceedings*



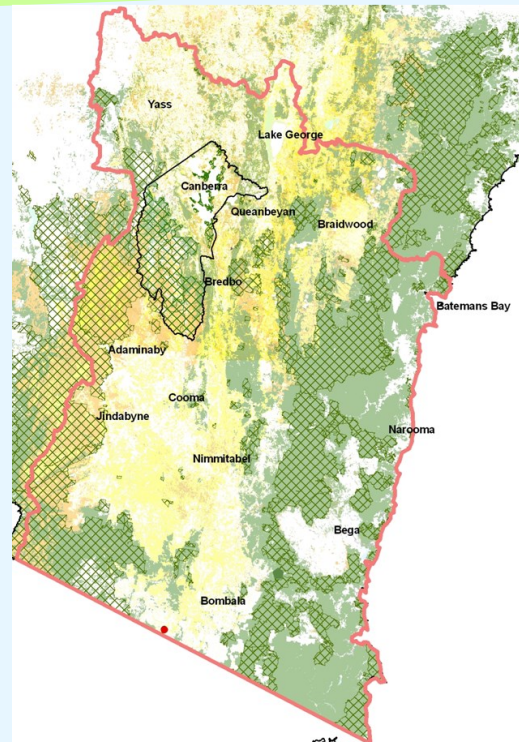
This year, Kosciusko to Coast (K2C) became the LFW Regional Provider for Yass Valley, Cooma-Monaro, Goulburn-Mulwaree, Snowy River, Eurobodalla, Bega Valley and Bombala shires. In some overlapping areas they work in with existing Regional Provider Palerang Local Area Network for Sustainability (PLANS).

Since 2006, K2C has been committed to consolidating natural vegetation and halting the further decline and loss of species across the K2C to Coast Region. Stretching from Kosciuszko NP to the south coast of NSW, the region occupies the greatest altitudinal sequence on the Australian continent, supporting a range of ecosystems and ecological communities ranging from alpine snowfields to coastal heath and dunes.

K2C is successfully engaging and supporting local landholders in conservation activities. It has 13 government and non-government natural resource management or biodiversity focused partners. It targets areas of high quality or sensitive biodiversity and enhance linkages between them.

There are many threatened ecological communities and threatened species groups in the region including:

- Native Grasslands
- Grassy Woodlands
- Wetlands
- Valley Floor Watercourses
- Small Bush Birds
- Arboreal Mammals and
- Forest areas that contain threatened vegetation communities, flora and fauna.



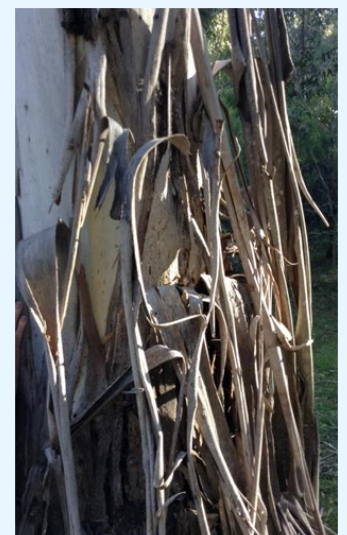
K2C has developed the K2C-ALA Species Atlas and the K2C Site Atlas, and has implemented a range of projects including Landscape Connectivity and Traditional Land Management Practices

In November, K2C enjoyed very successful *Land for Wildlife* and *Who's Living on Your Land* workshops and visited areas including Tombong, Black Flat and Delegate

Below: Threatened species *Thesium australe* (Austral toadflax).  
Right: The shaggy bark of the Manna Gum



Left: The Red-rumped Parrot







## LAND FOR WILDLIFE IN THE NAMBUCCA



Nambucca Valley Landcare was fortunate to receive a grant this year from the Foundation for National Parks & Wildlife. The Grant enabled us to hold an educational day and get-together for landholders who have conserved their land under the LfW program.

The schedule for the day was a busy one. The morning sessions were dedicated to rainforest and eucalypt plant ID methods and local threatened species. There was plenty of time allowed in the afternoon for the landholders to talk about their work on their own properties and to showcase their work as the event was held on one of their properties.

We have found that members love to talk about their trials and tribulations and that everyone learns so much from hearing about each other's efforts and discussing ideas and methods. We were also fortunate to have John Asquith, the NSW LfW coordinator, come up from the central coast as a guest speaker on the day.

In the last two years 22 landholders have joined the LfW program in the Nambucca conserving a total of 600 hectares of land. Funding in 2014 was from the North Coast LLS and in 2015 the Community Environment Network funded the assessments.



*Morning Activities*

Nambucca Valley Landcare considers that supporting landholders via such occasions is of utmost importance as they enable the exchange of information and ideas. In addition, they provide an opportunity to network, and to support and encourage conservation efforts. This helps landholders to achieve positive outcomes on their properties for improving habitat for wildlife.



*Field Trip to showcase LfW efforts*



## Review of NSW Biodiversity Legislation

The NSW Government was to release planned legislative changes in November following the Biodiversity Review in 2014. However, this has not happened and is now expected in next parliament.

NSW is blessed with incredible wildlife and iconic natural beauty. Nature and the great outdoors are part of what defines us as Australians and yet almost 1000 plants and animal species are threatened with extinction across our great state.

A report entitled: ***A New Deal for Nature*** can be downloaded from <http://www.nature.org.au/>





Community Environment Network  
PO Box 149  
OURIMBAH NSW 2258

POSTAGE  
PAID  
AUSTRALIA

## Land for Wildlife Forum: 7 & 8 Aug, 2015

On Day 2 of the Forum, attendees enjoyed visiting LfW properties in the Wingecarribee Shire. The properties showcase and celebrate efforts to restore habitat.

The first property was "Andrewville" located near Wingecarribee Reservoir and owned by Jane and Martin Lemann.



The second was land known as "Upper Holt", Frensham.



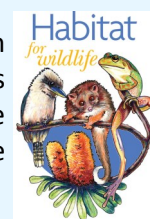
*CEN is grateful to our Guest Speakers and our Field Trip hosts for contributing to the success of the Forum.*

## Bridging the Urban – Rural Divide with Land for Wildlife & Habitat for Wildlife



**Land for Wildlife** is a voluntary property registration scheme for rural landholders with half a hectare of native bushland or more. It aims to assist landholders to maintain wildlife habitats on their land. Registration is free and non-binding. The good faith agreement between the CEN and landholders does not change the legal status of property, and information is confidential.

**Habitat for Wildlife Online** is a program available for urban or rural landholders and renters who are interested in wildlife conservation but who may not have a large bushland remnant on their property.



Smaller holdings can provide safe havens for wildlife moving between larger bushland areas. For a small fee, registrants will receive a membership certificate, a small HFW sign, a resource kit and a newsletter for two years.

### Further Information

- [www.cen.org.au/CEN-Projects/Habitat-for-Wildlife™/](http://www.cen.org.au/CEN-Projects/Habitat-for-Wildlife™/)
- [www.cen.org.au/Habitat-for-Wildlife™/fact-sheets7.html](http://www.cen.org.au/Habitat-for-Wildlife™/fact-sheets7.html)
- <http://cen.org.au/Land-for-Wildlife/>

After reading, please pass this newsletter on to a friend who may be interested in LfW.



Land for Wildlife - NSW  
Community Environment Network  
PO Box 149  
Ourimbah NSW 2258  
Ph: 4349 4756  
Fax: 4349 4755  
Email: [lfwnsw@cen.org.au](mailto:lfwnsw@cen.org.au)  
Web: [www.cen.org.au/Land-for-Wildlife](http://www.cen.org.au/Land-for-Wildlife)  
[www.facebook.com/lfwhawkesburytohunter](https://www.facebook.com/lfwhawkesburytohunter)

LfW State Coordination is supported by the NSW Office of Environment and Heritage.

We thank them for their assistance.

[conservationpartners@environment.nsw.gov.au](mailto:conservationpartners@environment.nsw.gov.au)



Office of  
Environment  
& Heritage